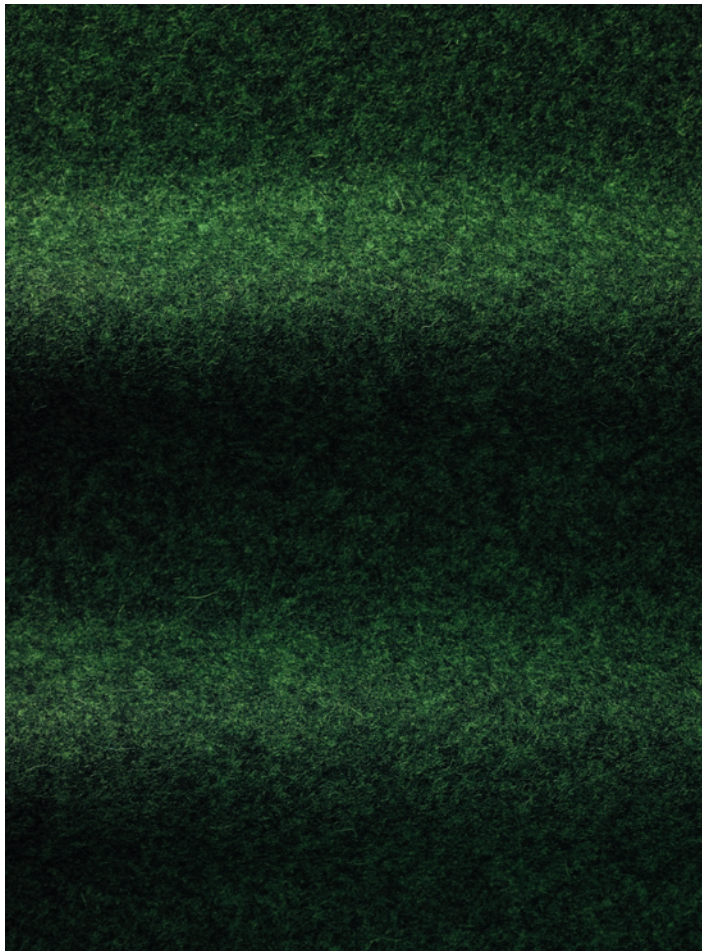


Divina Melange is a textile characterised by its lack of texture and nap and consequently the fabric accentuates the dimensions of the furniture, giving prominence to the colours.

Melange means mixture. The existing six grey and beige colours are produced by mixing varying proportions of either black or brown wool with white wool. The different colours of wool are mixed before the garment is spun. The new colours have come about by dipping the two base colours in bold, virtually luminous pigments. The result is 18 coloured melanges.



Designer	Finn Sködt
Type	upholstery
Composition	100% new wool
Yarn type	staple
No. of colours	24
Width	150 cm
Weight	approx. 840 g/lin.m
Abrasion	approx. 45.000 rubs acc. to the Martindale method, EN ISO 12947
Pilling	note 3, EN ISO 12945
Fire tests	BS 5852, ig. s. 2-5 NF D 60 013 US Cal. Tech. Bull. 117 AS/NZS 1530.3 DIN 4102 B2, ÖNORM B1/Q1 EN 1021-1/2 IMO A.652(16) UNI 9175, 11M
Light fastness	note 5-7, ISO 105-B02
Shrinking	0 %
Warranty	All Kvadrat upholstery comes with a 10-year warranty. Please check the Kvadrat warranty conditions. All Kvadrat textiles are tested by independent institutes to meet the requirements for contract textiles for abrasion, light fastness and flammability.

Available colours page #1/1



C0120

C0170

C0180

C0220

C0260

C0280



C0421

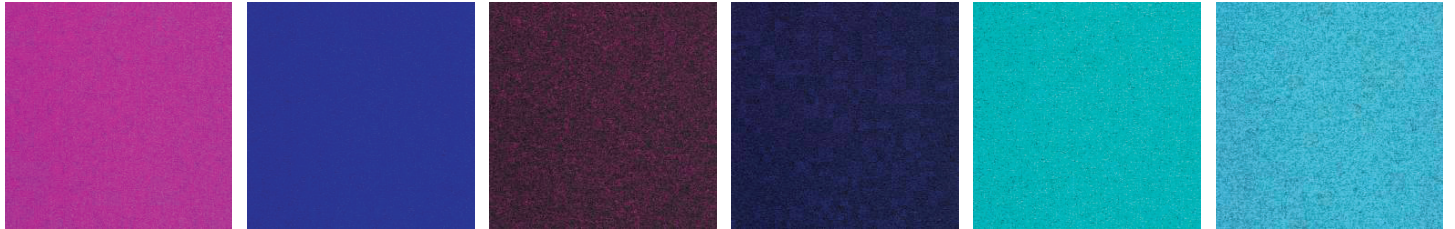
C0471

C0521

C0531

C0571

C0581



C0621

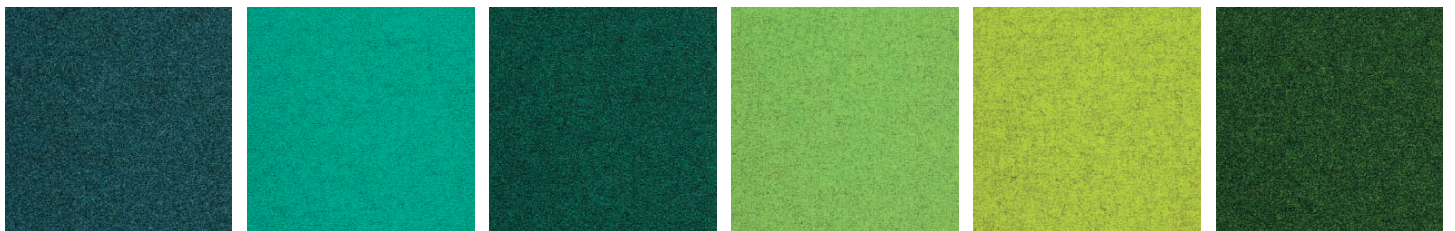
C0631

C0671

C0681

C0721

C0731



C0771

C0821

C0871

C0920

C0931

C0971