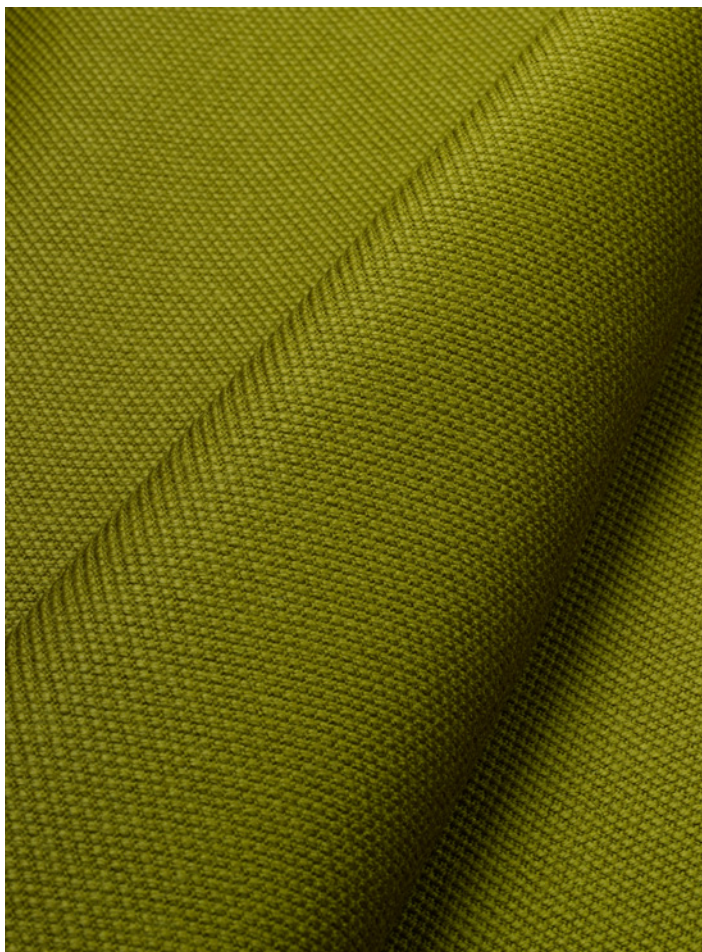


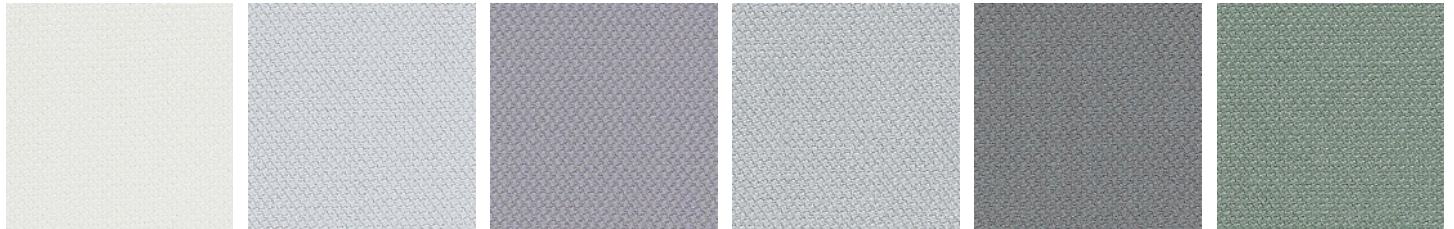
Steelcut is the result of the synergy created by combining *Frans Dijkmeijer's* scientific based weaving techniques and *Giulio Ridolfo's* intuitive sense of colour. Steelcut consists of harmonious colours supplemented with a few bright accent colours.

This produces a sophisticated palette that can be applied subtly or used to *create a statement*.



Designer	Frans Dijkmeijer & Giulio Ridolfo
Type	upholstery
Composition	90% new wool 10% nylon
Yarn type	staple, worsted
No. of colours	37
Width	140 cm
Weight	approx. 780 g/lin.m
Abrasion	approx. 80,000 rubs according to the Martindale method, EN ISO 12947
Fire tests	AS/NZS 3837, class 2 BS 5852, ig. s. 2 BS 5852, part 1 DIN 4102 B2, ÖNORM B1/Q1 EN 1021-1/2 UNI 9175, 11M NF D 60 013 IMO A.652(16) US Cal. Tech. Bull. 117
Lightfastness	5-7 (ISO 1-8)
Shrinking	0 %
Warranty	All Kvadrat upholstery comes with a 10-year warranty. Please check the Kvadrat warranty conditions. All Kvadrat textiles are tested by independent institutes to meet the requirements for contract textiles for abrasion, light fastness and flammability.

Available colours page #1/2



C0110

C0120

C0135

C0140

C0155

C0160



C0180

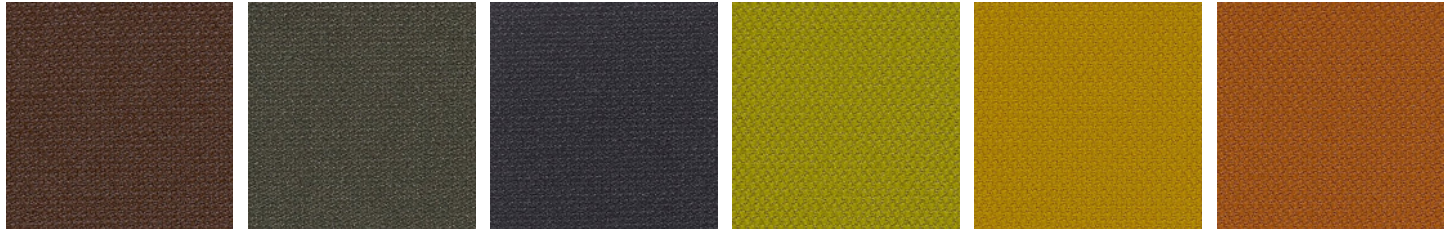
C0190

C0220

C0240

C0255

C0265



C0365

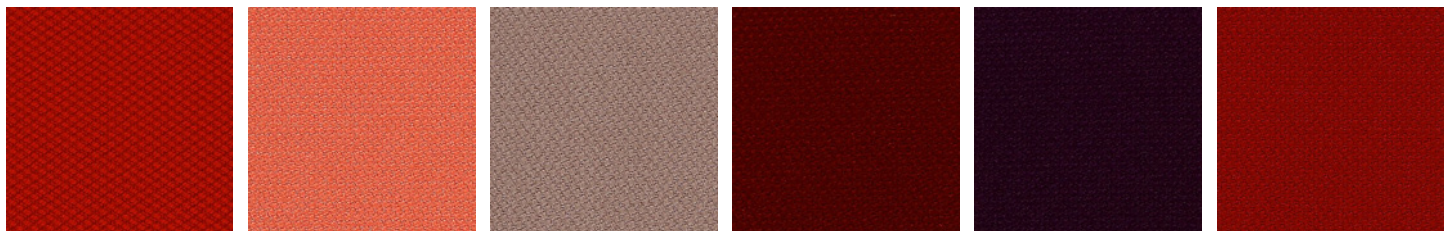
C0370

C0380

C0435

C0445

C0535



C0545

C0550

C0605

C0615

C0625

C0635



C0655

C0660

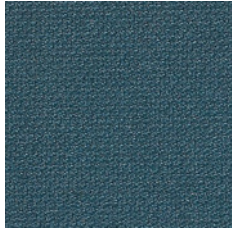
C0685

C0695

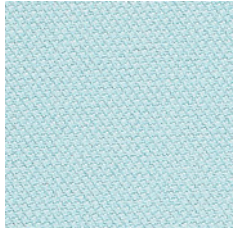
C0760

C0775

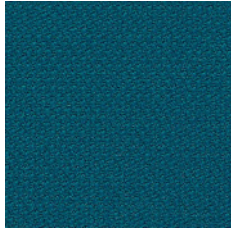
Available colours page #2/2



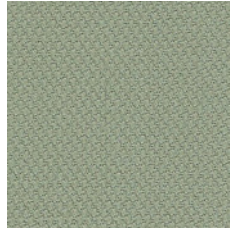
C0780



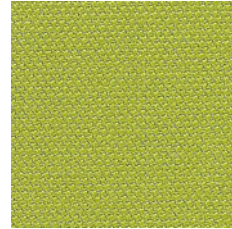
C0820



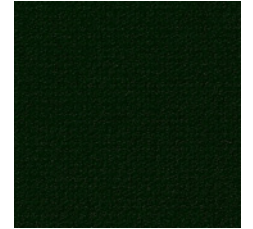
C0835



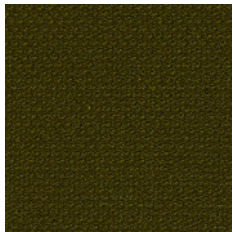
C0935



C0950



C0975



C0985